

Class 10 Measure for Measure

Abstract arrangement with at least two abstract qualities. Using fresh or dried plant material with fresh roses.

Section F: Novice Arrangement

Eligible for CLRS Novice Award

*He wears the rose of youth upon him.
Anthony and Cleopatra*

Class 11 What You Will (Twelfth Night)

Arrangers choice of design. Please state type of design on card.

Section G: Judges Challenge

*Does one venture out
to see the world
or stay at home
Because of love*

Class 12 Two Gentlemen of Verona

Arrangers choice of design. Please state type of design on card.

:

**All Rose Lovers Welcome!**

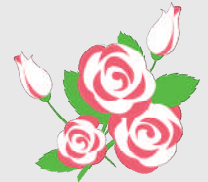
We'd like to invite you to visit our meetings and join our society. Our society is celebrating its 25th anniversary, so come join the celebrations! Our meetings are held the first Monday of each month, September through May (with the exception of September and January meetings, which are held the second Monday), at 7 p. m., at the Village Church of Christ on Savage Road, just off Savannah Highway in the West Ashley area. Our December meeting is a banquet elsewhere.

18th Annual

Charleston Rose Show

2010

Celebrating the



25th Anniversary



Of the Charleston Lowcountry
Rose Society

Saturday, May 8, 2010

Northwoods Mall

Entries Accepted	6 – 10 a.m.
Judging Begins	10:15 a.m.
Show Open to Public	1 - 5 p.m.

*Presented by
Charleston Lowcountry Rose Society
in cooperation with Northwoods Mall*

Welcome to the Charleston Rose Show

The Charleston Lowcountry Rose Society proudly celebrates its 25th anniversary this year.

On behalf of the society, I extend a warm welcome to all of the exhibitors and visitors to our annual Charleston Rose Show. I hope that each of you enjoys what is considered by many rosarians in the Carolinas to be one of the best shows held annually.

Our show is being sponsored this year by Northwoods Mall, and I sincerely thank them for their help and cooperation in staging this event. I also thank our other sponsors, patrons, and supporters, and especially the members of our society who have worked many long hours to assure the success of this show.

We have an educational booth set up to provide you with information on roses and their culture.

Claude Thomas, President

Rose Show Committees

Co-Chairs: Claude Thomas 843-795-4130, Kathy Woolsey 843-795-5062

Vice-Chair: Mary Beth Martin Petrovick

Arrangements Division: Kathy Woolsey

Horticulture Division/Schedule: Sandy Lundberg

Awards: Jim Lancaster

Tally and ARS Records: Linda Godwin

Certificates: Lynn Edlin

Clerks and Supplies: Priscilla Fletcher

Education: Monica Jacques

Hospitality: Kathy Crowder

Judges: Sandy Lundberg

Judges Breakfast Hostess: Cindy Ellis

Properties: Kathy Woolsey

Placement/Security: Mike Denson

Photographer: Mary Lee Kirkland

Publicity: Pamela Levi

Registration: Bill Prioleau

Schedule Layout: Mary Beth Martin Petrovick

Judge's Breakfast Arrangement: Peggy Heinsohn

Contact: Claude Thomas: 843-795-4130

Section C: Novice Arrangement

Eligible for CLRS Novice Awards

*I know a bank where the wild thyme blows,
Where oxlips and the nodding violet grows,
Quiet over-canopied with luscious woodbine,
With sweet musk-roses and with eglantine,
A Midsummer Night's Dream*

Class 6 A Midsummer Night's Dream

Arranger's choice of design. Please state type of design on card.

ARRANGEMENTS USING MINIATURE/MINIFLORA ROSES

Section D: Traditional Arrangements

Eligible for ARS Mini-Royalty Award

*For nothing this wide universe I call,
Save thou, my rose; in it thou art my all.
Sonnet CLX*

Class 7 The Merry Wives of Windsor

Mass arrangement using all fresh plant material with fresh roses.

Class 8 Much Ado About Nothing

Line mass arrangement using all fresh plant material with fresh roses.

Section E: Modern Arrangements

Eligible for the ARS Mini-Artist's Award

*Their lips were four roses on a stalk,
And in their summer beauty kissed each other.
King Richard III*

Class 9 All's Well That Ends Well

Modern arrangement. Using fresh or dried plant material with fresh roses. Please state type of design on entry card.

SPEAKING OF ROSES

By The Bard

*The rose looks fair, but fairer we it deem
For that sweet odour which doth in it live.*

Sonnet LIV

Section A: Traditional Arrangements

Eligible for the ARS Royalty Award

*At Christmas I no more desire a rose
Than wish a snow in May's new – fangled mirth:
But like of each thing that in season grows.
Love's Labour's Lost*

Class 1 Love's Labour's Lost

Mass arrangement using all fresh plant material with fresh roses.

Class 2 As You Like It

Line-Mass arrangement using all fresh plant material with fresh roses.

Section B Modern Arrangements

Eligible for ARS Artist's Award

*Prick not your finger as you pluck it off.
Lest, bleeding, you do paint the white rose red.
King Henry VI*

Class 3 Romeo and Juliet

Modern Arrangement using two containers. Using fresh or dried plant material and fresh roses.

Class 4 The Tempest

Abstract arrangement with at least two abstract qualities. Using fresh or dried plant material and fresh roses.

Class 5 The Comedy of Errors

Modern arrangement on a pedestal designer's choice. Please state type of design on card. Using fresh or dried plant material and fresh roses.

JUDGES

Chair of Judges: Sandy Lundberg

Arrangements: Nancy Humphreys, Marcia Flaglier, & Sandy Dixon

Horticulture: Tom Estridge, Michael Williams, Susan Waites, Robert Myers, Hazel Hruby, Nancy Rickard, Allene Able, Edwin Krauss, Pam Russell, Rob Russell, Karen Radde* apprentice

Reservations for Judges Breakfast

A breakfast in honor of the judges serving at our show will be held at Perkins Restaurant.

For reservations contact:

Peggy Heinsohn 843-588-2805; email: fnptabbawinds@aol.com

DIVISION I — ROSE HORTICULTURE

1. TIME AND PLACE. Entries will be accepted at Northwoods Mall on May 8, 2010 between the hours of 6:00 a.m. and 10:00 a.m. only. All exhibitors must register with the Registration Clerk and obtain an exhibitor's number. Entries will not be accepted after 10:00 a.m. when the show area will be closed except to the Placement Committee, clerks, judges and designated show officials.

2. WHO MAY EXHIBIT. All rose growers are cordially invited to exhibit in this show. Membership in a rose society is not required. All specimens must have been grown by the exhibitor in his/her own outdoor garden. Only one person or team may enter from one garden.

3. NOVICE, JUDGES' AND CHALLENGE CLASSES. Novice classes are limited to exhibitors who have never won a blue ribbon in an ARS-accredited show. Novices may also enter all show classes. Judges of this show and members of their immediate families may exhibit only in classes designated for them.

4. ENTRY TAGS. Official ARS entry tags must be used and will be provided. Both top and bottom of each tag must be completed, including the exhibitor's number.

5. ROSE NAMES. Roses must be listed in an ARS-recognized publication with an ARS exhibition name to be eligible for entry.

6. MULTIPLE ENTRIES. As many entries as desired may be made in each class, provided each entry is a different variety or combination of varieties unless otherwise noted. Duplicate entries will be disqualified.

7. GROOMING. Leaves should be free of any residue. Any specimen may have side buds or spent blooms removed to improve appearance. This must be done

skillfully in order to avoid penalty. Stem length should be in proportion to the size of the bloom.

8. WEDGES AND CONTAINERS. Plastic wrap or Styrofoam wedges may be used to position specimens, but should not protrude above the container. Uniform containers will be provided except as noted. Exhibitors are urged to show all large roses with at least 3 inches of stem in the water, miniatures with 1-1/2 inches.

9. ONE BLOOM PER STEM. Entries must be shown without side buds. Except as noted, each specimen should be at exhibition stage. Generally, the exhibition bloom is considered in its most perfect form when 1/2 to 3/4 open. It should be noted, however, some varieties are most perfect when fully open.

10. FULLY OPEN. Entries must be shown with one bloom per stem, no side buds. Stamens must show. Varieties of less than 12 petals may not be shown in this class.

11. SPRAYS. Entries must be sprays having two or more blooms. Hybrid Teas and Grandifloras should display blooms as near to exhibition stage as the variety permits. Floribundas and Polyanthas are exhibited as they are naturally grown. All sprays are judged for overall form and individual floret form. Discreet disbudding is permitted.

2. CLIMBERS. Entries must be one stem with one or more blooms, naturally grown or disbudded. Large-flowered Climbers (LCI) must be entered in Class 24. All other roses with the word "Climbing" as part of their horticultural classification must be entered in the same classes as their respective bush counterparts.

13. OLD GARDEN ROSES BEFORE 1867. The cultivar must have been introduced prior to 1867. Side buds, sprays and stem-on-stem are permitted.

14. OLD GARDEN ROSES IN OR AFTER 1867. These roses include Old Garden Roses with unknown dates of introduction and those introduced in 1867 or later. Side buds, sprays and stem-on-stem are permitted.

15. ENGLISH BOXES, PALETTES, ROSE BOWLS AND PICTURE FRAMES. ARS rules will be followed. Overall appearance will replace the points normally allotted to stems and foliage. Entries are limited to one entry per class per exhibitor. All properties, such as vases, containers, staging hardware, etc., will be available on a first come, first served basis.

PROHIBITED MATERIALS. No artificial flowers, fruits, vegetables or plant material will be allowed. No plant material on the Area or State Conservation List is allowed. The American Flag may not be used in an arrangement.

STAGING OF CLASSES. Classes 1-4 and 6 and 12 will be staged in white niches 40"high, 32"wide and 18"deep. Backgrounds are permitted and must be furnished by the exhibitor.

Class 5 will be staged on flat black pedestals, 16" square and 42" high. Underlays, not to exceed 16" square, are permitted.

Classes 7-11 will be staged at eye level in white niches 10" high, 8" wide and 6" deep. Backgrounds are permitted and must be provided by the exhibitor.

JUDGING AND SCALE OF POINTS. The Arrangement Division shall be governed and judged by the current American Rose Society rules and procedures. The ARS Standard Scorecard will be used to judge all arrangements. Only judges and clerks will be allowed on the floor during the judging process, and the decisions of the judges will be final.

DESIGN SCALE OF POINTS

Conformance= 15 points

A. naming of roses

B. conformance to type of design

C. other specific requirements of the schedule

Design = 30 points (5 points per design principle)

Balance - Dominance - Contrast - Rhythm - Proportion - Scale

Perfection of Roses - 30 points (including condition of other plant material)

Creativity and Expression - 15 points

Distinction - 10 points (superiority in every respect)

ARS ROSETTES AND CERTIFICATES two sets (one for standard and one for miniature/mini-flora arrangements) will be awarded for winning entries scoring at least 92 points and must be a first place winner as follows:

Royalty Award selected from Class 1 or 2

Artist's Award selected from Classes 3, 4, or 5

Mini-Royalty Award selected from Class 7 or 8

Mini-Artist's Award selected from Classes 9 or 10

CLRS Novice Award selected from Classes 6 or 11

Best Judge's Certificate Award- Class 12

DIVISION II — ROSE ARRANGEMENTS

Theme: SPEAKING OF ROSES 2010

RULES FOR ARRANGEMENTS

WHO MAY EXHIBIT & ADVANCE REGISTRATION? The arrangement competition is open to the public. All design entries are by advance reservations with Kathy Woolsey, 843-795-5062, by May 1, 2010.

LIMITATION ON ENTRIES. No exhibitor may enter more than one design in each class. Each entry must be the work of the exhibitor. No one but the exhibitor may touch or move an arrangement. If all efforts to locate the arranger fail, the chairman of arrangements may carefully move an arrangement.

ROSE, ROSE NAMES AND CLASSIFICATION. Roses grown outdoors and with high quality must be used in all arrangements but need not be grown by the designer. All roses must be identified in accordance with ARS rules and with the correct rose names. Only roses classified as Miniatures/Minifloras by ARS may be used in miniature arrangements. All types of roses may be used in all other arrangements.

TIME AND PLACE. Entries will be accepted at Northwoods Mall Center Court on May 8th between 6 a.m. and 10 a.m. Judging will start at 10:15 am. Arrangements may be picked up after the show at 5 p.m.

FRESH ROSES. Fresh roses must be the dominant flower interest in all designs. Other fresh and /or dried flowers and foliage may be used unless otherwise stated in the schedule. Line materials may include dried, treated and painted plant materials. Bases, accessories and under lays are allowed in all classes.

NOVICE CLASSES. The Novice Sections are open to people who have never won a blue ribbon in the Rose Arrangement Division of an ARS Rose Show. Exhibitors must create designs as specified and identified in accordance with the ARS rules, and with the correct rose names written on the entry tags.

16. PLACEMENT. All entries will be placed on the show tables by the Placement Committee, except for the Challenge Classes, which must be placed by the exhibitor. Once placed, no person may touch, adjust or transfer any challenge class entry, except the exhibitor. Other entries may be moved as needed by the placement committee. Once placed, no entry may be withdrawn. The Placement Committee will place entries alphabetically, by variety, within each class.

17. GUIDELINES FOR JUDGING. ARS Accredited Judges, who may be assisted by ARS Apprentice Judges, will judge the show. **ARS Guidelines for Judging Roses will be followed to include the following Point Scale:**

Form	25
Substance	15
Color	20
Stem and Foliage	20
Balance and Proportion	10
Size	10

Judges will disqualify entries for the following reasons:

- Misnamed, misclassified, unlabeled or mislabeled entries
- Stem-on-stem, except for Species, Old Garden Roses and Shrubs
- Foreign substances applied to foliage, stem or bloom to improve appearance
- Side buds on a specimen, which must be shown disbudded
- Violation of ARS or local show rules
- Appearance of exhibitor's name anywhere other than the designated place on the entry tag.

18. THE QUEEN, KING, PRINCESS OF SHOW AND COURT OF HONOR (4 runners-up). Selected from the blue ribbon winners in Classes 16 and 17.

19. PRINCE OF SHOW. Selected from blue ribbon winners in Class 23.

20. MINIATURE QUEEN, KING, PRINCESS AND COURT OF HONOR (3 runners-up). Selected from blue ribbon winners in Class 40.

21. MINIFLORA QUEEN, KING, PRINCESS AND COURT OF HONOR (3 runners up). Selected from blue ribbon winners in Class 44.

22. NOVICE QUEEN AND KING. The Novice Queen will be selected from blue ribbon winners in Class 46. The Novice King will be selected from blue ribbon winners in class 47.

23. RIBBONS, AWARDS AND CERTIFICATES. Judges may give or withhold awards, including ribbons, if, in their judgment, an exhibit does not merit an award.

Blue, red, yellow and white ribbons will be given where merited. Only blue ribbon winners are eligible for ARS Awards, ARS Certificates and other Rose Show Awards. Only blue ribbon entries will qualify for the Awards Table. Decisions of the judges are final.

24. CONTROL OF ENTRIES AND EXHIBITS. All entries will become the property of the Show Committee. All exhibits, ribbons and entry tags must remain undisturbed until the close of the show at 5 p.m. After they are placed on the show tables, entries are under control of the Show Committee. This committee reserves the right to add water and to remove wilted or inferior blooms at any time during the show.

25. AWARDS. Exhibitors should make necessary arrangements to claim their awards. Awards will not be mailed. Certificates and ribbons will be mailed to exhibitors only upon request at time of registration.

26. RESPONSIBILITY. The Charleston Lowcountry Rose Society, its Members and Northwoods Mall will not assume responsibility or liability for damage or loss to any person or property. Exhibitors must make necessary arrangements to claim their vases, arrangements and personal property at the end of the show at 5 p.m.

27. QUESTIONS. Any questions that arise and are not covered by these rules will be referred to the Show Chairman for resolution.



Class 41. MINIATURE SPRAYS. One stem with 2 or more blooms, varieties of more than twelve petals.

Class 42. FULLY OPEN MINIATURE/MINIFLORA ROSES. One bloom per stem, no side buds, varieties of more than twelve petals, stamens must show.

Class 43. SINGLE MINIATURE ROSES. Varieties of 4 to 8 petals, may be one bloom per stem or spray.

MINIFLORAS

Class 44. ROYALTY AWARDS: MINIFLORA ROSES. One bloom per stem, exhibition stage, no side buds. This class eligible for Miniflora Queen.

Class 45. MINIFLORA SPRAYS. One stem with 2 or more blooms, varieties of more than twelve petals.

NOVICE

Class 46. HYBRID TEAS, GRANDIFLORAS, FLORIBUNDAS. One bloom per stem, no side buds, exhibition stage.

Class 47. MINIATURE/MINIFLORA ROSES. One bloom per stem, no side buds, exhibition stage.

Class 48. Earthkind & Knockout roses. Spray or one bloom per stem, stem-on-stem permitted.

JUDGES' CLASSES

Class 49. COLLECTION OF 3 HYBRID TEAS, GRANDIFLORAS, FLORIBUNDAS, SHRUBS. May be same or different varieties displayed in separate vases each with an individual entry tag.

Class 50. COLLECTION OF 3 MINIATURE/MINIFLORA ROSES.

May be same or different varieties displayed in separate vases each with an individual entry tag.



Class 31. NOISETTE ROSES. Individual spray or one bloom per stem, stem-on-stem permitted. *In recognition of the horticultural contribution of John Champneys and Philippe Noisette in creating the Noisette class in 1811.*

MINIATURE/MINIFLORA COLLECTION CLASSES

Class 32. MINIATURE or MINIFLORA CYCLE OF BLOOM. Three (3) individual specimens, same variety, one bud, one exhibition stage and one fully open exhibited in one container.

Class 33. COLLECTION THREE DIFFERENT MINIATURES/MINIFLORAS.

One bloom per stem, different varieties, exhibition stage, exhibited in one container.

Class 34. MINIATURE/MINIFLORA ENGLISH BOX. Six miniature/miniflora blooms (may be same or different), exhibition stage, no foliage. Use 3"x 5" card to list names and order of blooms.

Class 35. MINIATURE/MINIFLORA ARTIST'S PALETTE. Five miniature/miniflora blooms, exhibition stage, no foliage. Different varieties with emphasis on a variety of colors. Use 3"x 5" card to list names and order of blooms.

Class 36. MINIATURE/MINIFLORA ROSE BOWL (EXHIBITION). One miniature/miniflora bloom floating in bowl of water, exhibition stage, no foliage.

Class 37. MINIATURE/MINIFLORA ROSE BOWL (FULLY OPEN). One miniature/miniflora bloom floating in bowl of water, fully open, stamens must show, no foliage.

Class 38. MINIATURE/MINIFLORA ROSE BOUQUET. Any extra miniatures/minifloras, any number, any stage of bloom, at least three different varieties, in container provided by exhibitor. Not necessary to list varieties on entry card.

Class 39. MINIATURE/MINIFLORA PICTURE FRAME. One mini/Miniflora, exhibition stage mounted in a picture frame supplied by the society.

MINIATURES

Class 40. ROYALTY AWARDS: MINIATURE ROSES. One bloom per stem, exhibition stage, no side buds, varieties of more than 12 petals. This class eligible for Mini Queen.

Horticulture Exhibit Classes

LOWCOUNTRY CHALLENGE CLASSES

Class 1. SEA ISLAND CHALLENGE. Five (5) one bloom per stem, individual Hybrid Teas or Grandiflora specimens, exhibition stage, each a different variety, exhibited in separate containers. Each specimen properly named with individual entry tags per container. (See rule 16).

Class 2. COASTAL CAROLINA CHALLENGE. Seven (7) individual Miniature blooms, one per stem, exhibition stage, each a different variety, exhibited in separate containers. Each specimen properly named with individual entry tags per container. (See rule 16).

Class 3. THE JANE B. MOYES AWARD. Seven (7) individual Miniflora blooms, one per stem, exhibition stage, each a different variety, exhibited in separate containers. Each specimen properly named with individual entry tags per container (See rule 16).

Class 4. FRAGRANT ROSES. Any fragrant specimen, one bloom per stem or spray, any stage of bloom.

Class 5. HI-LO CHALLENGE. An entry of one (1) Hybrid Tea, Grandiflora or Floribunda and one (1) matching Miniature or Miniflora. Both must be one-bloom-per-stem without side buds, at exhibition stage, correctly named and exhibited in separate containers each with a separate entry tag. Roses must be matching in color and form. The Miniature/Miniflora must be staged directly in front of the Hybrid Tea, Grandiflora or Floribunda.

LARGE COLLECTION CLASSES

Class 6. COLLECTION OF 3 HYBRID TEAS OR GRANDIFLORAS. Same variety, one bloom per stem, exhibition stage, exhibited in one container.

Class 7. COLLECTION OF 3 HYBRID TEAS OR GRANDIFLORAS. Different variety, one bloom per stem, exhibition stage, exhibited in one container.

Class 8. COLLECTION OF 5 HYBRID TEAS OR GRANDIFLORAS. Same variety, one bloom per stem, exhibition stage, exhibited in one container.

Class 9. CYCLE OF BLOOM. Three (3) Hybrid Tea or Grandiflora specimens, same variety, one bud, one exhibition stage, and one fully open, exhibited in one container.

Class 10. ENGLISH BOX (EXHIBITION). Six Hybrid Tea or Grandiflora specimens (may be same or different), exhibition stage, no foliage, one entry tag. Use 3"x 5" card to list names and order of blooms.

Class 11. ROSE BOWL (EXHIBITION). One Hybrid Tea or Grandiflora specimen, exhibition stage, floating in a bowl of water, no foliage. One entry per exhibitor.

Class 12. ROSE BOWL (FULLY OPEN). Same as above except fully open stage.

Class 13. ARTIST'S PALETTE. Five Floribunda specimens, different varieties, exhibition stage, no foliage. Use 3"x 5" card to list names and order of blooms.

Class 14. HYBRID TEA PICTURE FRAME. One hybrid tea bloom, exhibition stage with no foliage, mounted in a picture frame supplied by the society.

Class 15. ROSE BOUQUET. Any Hybrid Teas, Grandifloras and/or Floribundas. Any number, any stage of bloom, displayed in a container provided by the exhibitor. At least three different varieties. Not necessary to list names on entry card.

HYBRID TEAS and GRANDIFLORAS

Class 16. ROYALTY AWARDS. Hybrid teas, grandifloras and their climbing counterparts. Varieties of more than twelve petals, one bloom per stem, no side buds, exhibition stage. This class eligible for Queen.

Class 17. CHARLESTON QUEEN. Hybrid teas, grandifloras and their climbing counterparts. Varieties of more than twelve petals, one bloom per stem, no side buds, exhibition stage. Class limited to those individuals who have never won a Queen in an ARS show. The winning entry is also eligible for Queen of Show.

Class 18. HYBRID TEA OR GRANDIFLORA SPRAY. Varieties of more than twelve petals, one stem with two or more blooms at exhibition stage.

Class 19. FULLY OPEN HYBRID TEAS AND GRANDIFLORAS. One bloom per stem, no side buds, stamens must be visible and fresh.

Class 20. SINGLE HYBRID TEAS. Individual exhibition specimen or spray, four to eight-petaled varieties.

FLORIBUNDAS

Class 21. FLORIBUNDA-ONE BLOOM PER STEM. Individual specimens, displaying hybrid tea form. Singles and decorative specimens excluded. exhibition stage, no side buds.

Class 22. FLORIBUNDA< INFORMAL FORM. Individual specimens displaying decorative form and/or those with 4-8 petals (or are classed as a single by an ARS publication).

Class 23. FLORIBUNDA SPRAYS. Individual spray specimen, two or more blooms per stem, discreet disbudding permitted. This class eligible for Prince.

POLYANTHAS

Class 24. POLYANTHA SPRAYS. Individual spray specimen, two or more blooms, discreet disbudding permitted.

LARGE- FLOWERED CLIMBERS

Class 25. TRUE CLIMBER. Exhibition specimen, may be individual bloom or spray. (All climbing Hybrid Teas, Grandifloras, and Floribundas are to be exhibited in their respective counterpart sections.)

SHRUBS

Class 26. CLASSIC SHRUB. Includes hybrid kordesii, hybrid moyesii, hybrid musk, and hybrid rugosa. Spray or one bloom per stem, stem-on-stem permitted.

Class 27. MODERN SHRUB. Includes all roses listed as shrubs (S). Spray or one bloom per stem, stem-on-stem permitted. David Austin roses, Knockout roses included.

OLD GARDEN ROSES

Class 28. OLD GARDEN ROSES PRIOR TO 1867. May be individual specimen or spray, side buds, stem-on-stem are permitted. Dowager Queen will be awarded from this class.

Class 29. OLD GARDEN ROSES IN OR AFTER 1867. May be individual specimen or spray, side buds, stem-on-stem are permitted. The Victorian Rose Certificate will be awarded from this class.

Class 30. COLLECTION OF THREE OLD GARDEN ROSES. Each a different variety, any combination of sprays or one bloom per stem, exhibited in one container.